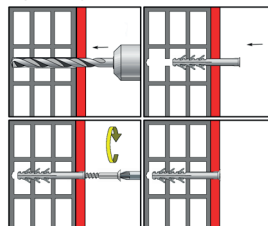


RM



The RM plug has **long expansion area** and is **suitable for through** – fixing into cavity bricks etc. **The special internal design**, the long expansion area, provides secure fixing into concrete, stone and softer material such as bricks and low density block work.

INSTALLATION:

**APPLICATION**

- › hollow brick
- › brick
- › concrete
- › stone

**MATERIAL**

Polyamide PA6
(Nylon)

**ADVANTAGES**

- › strong anchoring
- › high temperature resistance
- › easy installation

TECHNICAL DATA:

Size	Drill \varnothing	Minimal drill depth	Anchor length	Screw \varnothing	Fixable thickness	Recommended loads
8×60	8	70	60	5-5,5	5	0,75
8×80	8	90	80	5-5,5	25	0,75
8×100	8	110	100	5-5,5	45	0,75
8×120	8	130	120	5-5,5	65	0,75
8×140	8	150	140	5-5,5	85	0,75
8×160	8	170	160	5-5,5	105	0,75
10×80	10	90	80	6-7	15	0,92
10×100	10	110	100	6-7	35	0,92
10×120	10	130	120	6-7	55	0,92
10×140	10	150	140	6-7	75	0,92
10×160	10	170	160	6-7	95	0,92

All figures are in mm

Recommended loads in kN (1 kN = 100 Kg)



TRUHLÁŘ a spol., s.r.o.

Hlavní 812, 251 68 Hlubočinka, Czech Republic | tel.: +420 323 671 745 | fax: +420 323 671 744 | e-mail: export@ttt.cz